

# Shelby vs. Sage Intacct

Unlike Shelby's legacy system, Sage Intacct's cloud-based software can be customized to your specific church accounting needs. Take a look at how the two solutions stack up.

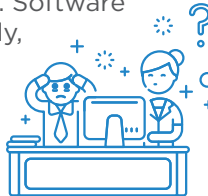
## Key Feature

shelby

sage Intacct

### Platform

On-site solution. Software is installed locally, so personnel must be at the church office to access the system.



The cloud-based platform means no installing or maintaining software. Personnel can access remotely, any time.



### Upgrades

System upgrades can be costly and time-consuming, often meaning significant downtime. Eventually, churches have to decide whether to purchase a newer version.



Sage Intacct rolls out four releases each year, at no cost and with virtually no downtime. You always have the most up-to-date version.



### Workflows

Cumbersome workflow processes and manual workarounds mean wasted time and manpower.



Tailor workflows to meet your specific needs. Multiple user types and licenses mean your entire accounting team can be working in the system simultaneously.



### Data Access

Accessing and exporting relevant data is difficult. The system can't consolidate data across divisions or locations.



Allows access to real-time data, whenever and wherever you have internet access.



### Reporting

- It's difficult to produce timely reports.
- Reports often have to be produced manually.
- The platform can't accommodate consolidated reporting for multiple entities or locations.



- Quickly generate consolidated reports for your entire organization, or break them out by location, department or fund.
- Create dashboards for stakeholders so they have access to the reports they need as soon as they log into the system.
- Users can drill down into reports and see the source data.



### Chart of Accounts

Grows each time you need to add a new account or fund.



Sage Intacct's dimensional structure allows you to maintain a small Chart of Accounts list.

