



SAGE MAS 500

Sage MAS 500 ERP is a highly reliable, robust, and integrated series of business applications delivering a complete business management solution that's flexible, scalable and full-featured—offering key business insights to make your company more productive and profitable.

sage
software

Your business in mind.



"Sage MAS 500 has allowed us to boldly go where we never thought we could. It has increased our productivity by 100 percent, saved us the work of two data entry people, and made us so successful that we've had to hire three new sales account executives. And these are just the gains we've seen in our first nine months."

Chris Holmes
Director of IT
Decipher, Inc.

Sage MAS 500 ERP

Sage MAS 500 offers a full range of products for a complete business systems solution:

FINANCIALS AND PROJECT ACCOUNTING

Sage MAS 500 offers deep accounting functionality and superior usability, ensuring critical information is available on demand. The seamless integration with popular desktop productivity tools and the Internet, make it an ideal solution for the ever-changing needs of today's growing businesses. Sage MAS 500 also offers powerful functions to help control projects, including the tracking of time and expense information. This helps prevent cost overruns, increases cash flow, and ultimately generates bottom-line savings with maximum profitability.

CRM AND E-BUSINESS

Sage MAS 500 includes powerful, Web-based modules that provide your salespeople, customers, and senior staff with timely information and system access. The CRM system, tightly integrated with the back office, provides customers and salespeople with access to place orders and manage their accounts. Our solution also provides lead management and forecasting tools to streamline the sales process. All in all, Sage MAS 500 gives customers the opportunity to significantly enhance both the productivity of the sales organization and customer satisfaction.

DISTRIBUTION

Sage MAS 500 provides advanced distribution capabilities that minimize carrying costs while maximizing product availability. Automated supply chain and warehouse management processes integrate solidly with demand forecasting to maximize your inventory control and profits. With features that support multi-warehouse configurations, as well as multi-site customers, Sage MAS 500 is optimized for a wide variety of distributors.

MANUFACTURING

The Sage MAS 500 manufacturing package is designed for many different industries. It handles production from raw materials through finished goods—working seamlessly with the accounting and distribution modules and pinpointing the areas where you can save time and money, while providing exceptional customer service.

Sage MAS 500 takes inquiry, drill-down, monitoring, and data analysis to a whole new level with out-of-the-box business intelligence tools including Business Insights Analyzer, Business Insights Explorer, Business Alerts, Crystal Reports®, Web Reports, and integration with desktop productivity tools.

Human Resources and Payroll

Sage MAS 500 offers cost-saving Human Resources, Payroll, and Attendance modules. These powerful modules allow you to automate HR and compliance activities, and also provide easy-to-use payroll management and tracking.

Customization and Integration

Every Sage MAS 500 module is built to allow customization and integration. World-class customization tools provide a foundation for Visual Studio.NET business application development, and include software controls, tools, wizards, and utilities. In addition, Data Porter, Data Migration, built-in import utilities, and Software Development Kit integration tools provide access to Sage MAS 500 data for seamless integration to third-party solutions.

Customer Insights— One Road to Success

Integrated Applications Provide the Complete Solution

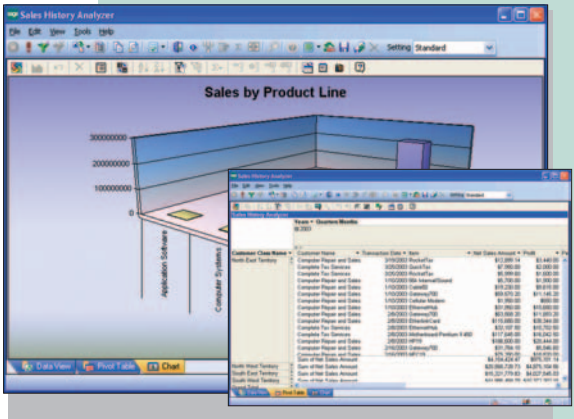
Customer Relationship Management

Evolving software applications are promising to transform customer relationships by improving awareness throughout your organization. Not only is our goal to connect businesses to their customers, but also to ensure that a business is connected from the inside out.

Sage MAS 500 enables a level of integrated customer relationship management (CRM) that equips companies with the front office capabilities they need to manage the demands of today's competitive business environment.

■ *eSalesforce and eCustomer*

In a competitive economy, empowering your employees with the tools they need to provide superior customer service will set you apart from the competition. An easy-to-use Web-based application, eSalesforce provides complete customer account management, whether your employees are in the office, at home or on the road. The eSalesforce module puts all the customer information they need, such as order, shipment, credit, payment, and commission information, in one place. The eCustomer module provides similar functionality to your customers, reducing telephone calls and enhancing their ability to keep track of their business with you.



Business Insights Analyzer users have the ability to organize, graph, and format summarized information within the Sage MAS 500 system. The new Business Insights Explorer (BIE) module is tightly integrated to the Analyzer module, allowing users to navigate into Business Insights Analyzer for more detailed study.

■ Sage CRM SalesLogix

Sage CRM SalesLogix Sales

Sage MAS 500 integrates with its sister product line, Sage CRM SalesLogix, to provide even more customer-centric solutions. These solutions manage all aspects of your sales cycle and standardize key sales functions by automating activities such as account and opportunity management, quotation and proposal generation, scheduling, forecasting, and reporting. They also provide sophisticated analytical tools and full-scale marketing campaign management to identify the most profitable customers and shorten the sales cycle.

Sage CRM SalesLogix Support

With the costs of acquiring new customers 5-10 times higher than retaining them, support solutions designed to build lasting relationships and customer loyalty can have a tremendous impact on your bottom line.

"There's no way we could have complied with Sarbanes-Oxley regulations without Sage MAS 500. The system gives us the checks, balances, and security controls we need for total accountability."

Mark Chollett
Director of Technology
Wiseco Piston, Inc.

Integrated Back Office Applications Provide a Complete Solution

Through its superior utilization of SQL Server technology, Sage MAS 500 can deliver key business benefits, deep financial functionality, and outstanding usability through powerful back office solutions. These include industry-leading financial management and project accounting solutions, as well as advanced inventory, distribution and manufacturing capabilities.

More Than Just Accounting—Financial Insights

Operating at the core of Sage MAS 500, fully integrated financial software provides you with insightful information gathered from your data and presented with advanced analysis capabilities and presentation-quality reporting. The financial series includes the following modules:

- Accounts Payable
- Accounts Receivable
- Advanced Consolidations
- Allocations
- Cash Management
- eExecutive
- Sage FAS Fixed Asset
 - FAS Asset Accounting
 - FAS Asset Inventory
- Financial Reporting
- General Ledger
- Multicurrency Management
- Web Reports

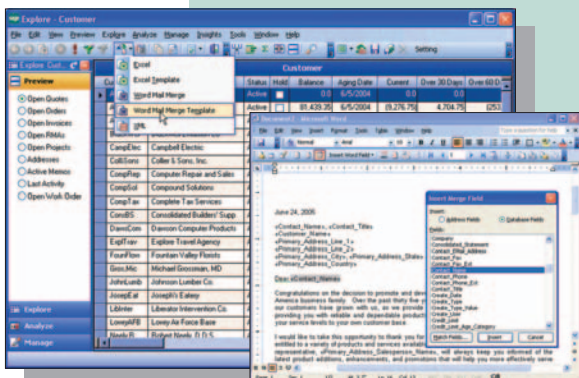
These scalable and flexible applications come with an easy-to-use graphical user interface and streamlined customization capabilities that can reduce data errors and integrate multiple processes on the desktop. Advanced reporting capabilities, including the ability to track key performance indicators, publish reports to the Web, and drill into data, empower your managers to make real-time decisions. Moreover, eExecutive allows management to review top-level financial and performance information in an online format—anytime, anywhere.

Robust Distribution for a Rich Bottom Line

Sage MAS 500 lets you reduce inventory carrying costs while optimizing product availability for superior customer service. With the ability to analyze and report up-to-the-minute information on your inventory, Sage MAS 500 can help anticipate change, even manage inventory across warehouses. Advanced forecasting features integrate with automated supply chain and warehouse management processes to minimize overhead and material costs. Modules available include:

- Advanced Kitting
- eOrder
- Inventory Management
- Inventory Replenishment (with forecasting and automated procurement)
- Product Configurator
- Purchase Order
- Sales Order
- Warehouse Management
- Shipment Processing

Designed by industry experts, every aspect of distribution system integration has been considered—warehouse management, shipping, supply chain management, and e-commerce. These solutions integrate your sales demand requirements with your supply chain to manage all aspects of sales, inventory management, and automated procurement.



The business-to-business e-commerce module, eCustomer, offers the power, flexibility, and ease of use for you and your clients to conduct business over your Web site.

“Sage MAS 500 is doing the same work as our tier-one product, but for only 75 percent of the cost.”

Roger Smith

Vice President of Finance and Information Technology

Luzenac America, Inc.

Cutting-Edge Manufacturing Technology

When demand hits, it's crucial that manufacturing is ready and able to deliver. Sage MAS 500 provides a complete solution that represents the next generation in manufacturing software—delivering the information you need in the format you want and transforming it into valuable business intelligence. This insight translates into every aspect of your business, including customer service, vendor performance and production quality. Manufacturing modules include:

- Light Manufacturing
- Advanced Planning and Scheduling
- Engineering Change Management
- Estimating
- Advanced Manufacturing
- Material Requirements Planning
- Product Configurator
- Shop Floor Control

One of the key advantages of the manufacturing solution is the rules-based advanced planning and scheduling system. The APS module allows companies to manage multiple production schedules by facility, conduct what-if analysis of the manufacturing process, and manage machine and tool resources in real time. Advanced, industry-standard scheduling rules help companies meet critical deadlines while providing enough flexibility to handle real world demands such as last-minute priority jobs and unexpected machine downtime.

Project Accounting Controls Projects with Exceptional Flexibility

Effective project management enables professional services firms and corporate IT departments to achieve operational excellence through the unique ability to control people, projects, and budgets with exceptional flexibility. Project Accounting's comprehensive rate matrix and estimating facilities, with the added capability for remote time and expense entry (offline or through the Internet), generates more revenue at a lower cost, eliminates wasted hours, and produces more bottom-line savings. The Sage MAS 500 project accounting modules support best-practices project management.

Project accounting modules include:

- Sage TimeSheet
- Microsoft Project Link
- Project Accounting

Market Leading Human Resource and Payroll Management

Accurately administrating a company's work force is vital to its success and growth. Sage Software recognizes this vital need by offering powerful human resources (HR) solutions:

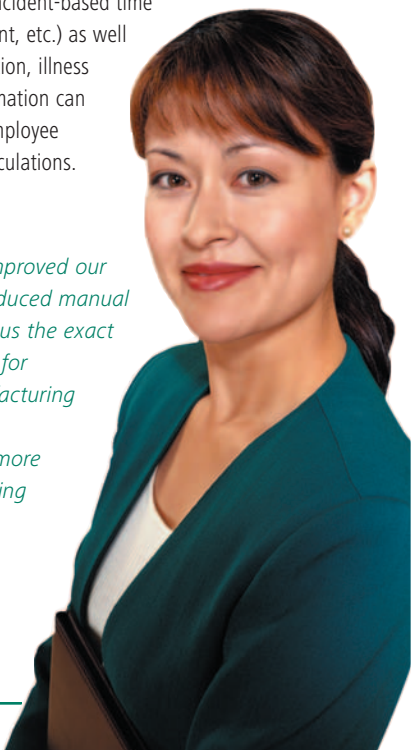
- Sage Abra
 - Abra Payroll
 - Abra HR
 - Abra Attendance


The Sage MAS 500 Abra HR module allows companies to manage information based on their unique HR structure and needs. Data is entered just once and shared with the entire system—leaving time to address other strategic business issues. Payroll is fully integrated with HR allowing benefits administration and attendance plan management to automatically update with payroll processing.

Abra Attendance offers easy setup, management, and monitoring of multiple variations of employee attendance plans. You can enable automatic recording of incident-based time off (jury duty, bereavement, etc.) as well as regular time off (vacation, illness and holidays). This information can then be used both for employee reporting and payroll calculations.

"Sage MAS 500 has improved our inventory systems, reduced manual processes, and given us the exact information we need for managing our manufacturing operations. It's been responsible for a lot more smiling faces—including mine."

Melissa Wilson
Customer Service Manager
Arc-diversified, Inc.




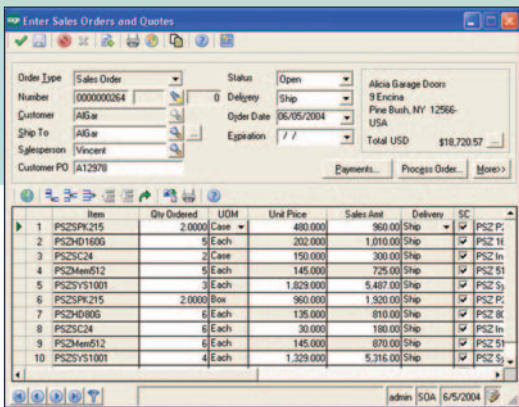


The sophisticated inventory forecasting and management tools of Sage MAS 500 can help you better serve your customers and lead your company to greater profitability.

"Sage MAS 500 is a good, strong accounting package for us. We're running a quarter-billion dollar company on it. We wouldn't if it didn't work effectively."

Steve Abbott
V.P. and Controller
Cemstone Products Company





Customization Tools: World-Class Development Toolkit

Sage MAS 500 customization tools provide a foundation for Visual Studio.NET business application development—the basis of Sage MAS 500 itself. Designed to significantly reduce the cost of developing customized business applications, these components allow you to improve system efficiency by easily modifying screens and forms, developing additional controls for your system, and programming with the original source code.

- The Customizer module gives you the ability to easily modify screens and forms to match your specific business processes, improve staff productivity, and achieve the desired look and feel. It also enables you to add industry-specific features, even if you lack extensive programming knowledge, without making changes to source code.
- The Software Development Kit of Sage MAS 500 lets you finish your development tasks faster and at a lower cost. It provides Visual Basic controls, wizards and utilities to solve housekeeping issues, including concurrency, user interface, security models, data handling, and more. With housekeeping issues handled by the Software Development Kit, your developers are free to build add-on programs or interface controls to Sage MAS 500, saving you development time and money.
- Sage MAS 500 Source Code, for code development and implementation, is available if required.

About Sage Software Mid-Market Division

Sage Software, a leading developer and marketer of business management and accounting software, offers a broad spectrum of high-quality, robust applications that suit a wide range of businesses and industries. The Sage Software customer satisfaction policy reinforces its advanced technologies and applications with award-winning support that is responsive, interactive, and easily accessible. Our charter is to help our customers manage and grow their businesses by being the leading provider of exceptional business management software and services.

Sage Software, combined with its U.K. parent company, is the world's leading business management and accounting software solution provider. The company, with more than 4.5 million customers, is listed on the London Stock Exchange (Reuters: SGE.L).

©2005 Sage Software, Inc. All rights reserved. The Sage Software logo and the Sage Software product and service names mentioned herein are registered trademarks or trademarks of Sage Software, Inc., or its affiliated entities. All other trademarks are the property of their respective owners.



Sage Software

56 Technology Drive
Irvine, CA 92618-2301
800-854-3415

www.sagesoftware.com